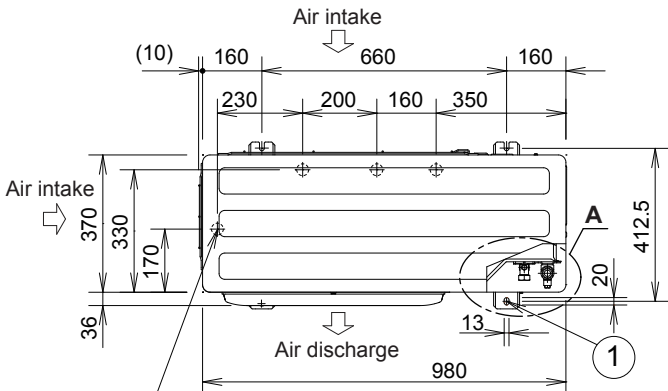


# 1. Outdoor Unit

## 1-2. Dimensional Data U-10LZ2E8

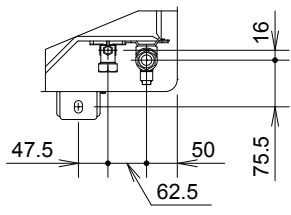
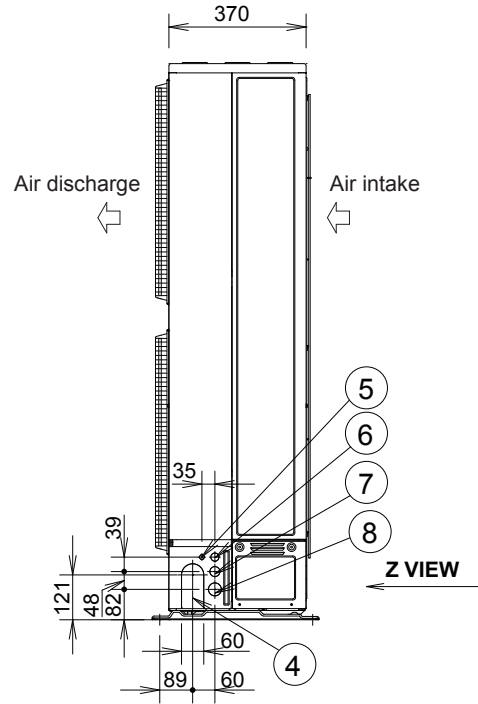
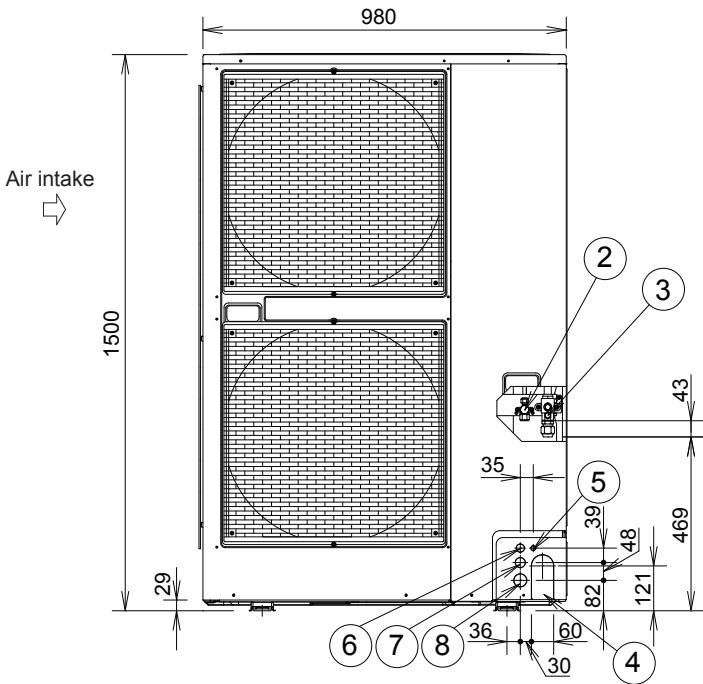
Unit: mm



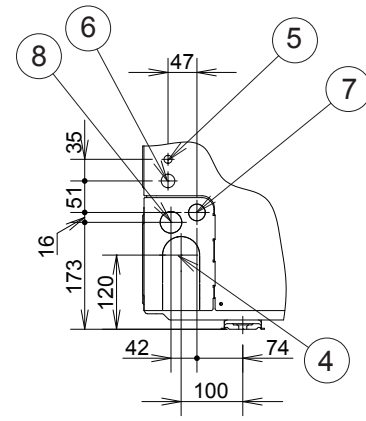
4 ×  $\phi$  32 holes (holes for drain)  
When using a drain pipe, install the drain socket (field supply) onto the drain port. Seal the other drain port with the rubber cap.

①	Mounting hole (4-R6.5), anchor bolt : M10
②	Refrigerant tubing (liquid tube), flared connection ( $\phi$ 9.52)
③	Refrigerant tubing (gas tube), flared connection ( $\phi$ 19.05)
④	Refrigerant tubing port
⑤	Electrical wiring port ( $\phi$ 13)
⑥	Electrical wiring port ( $\phi$ 22)
⑦	Electrical wiring port ( $\phi$ 27)
⑧	Electrical wiring port ( $\phi$ 35)

The tubing of the gas main has a diameter of  $\phi$ 22.22, but the connection to the service valve of the outdoor unit has a diameter of  $\phi$ 19.05, so a flare has to be used. Consequently, be sure to use the enclosed joint tube B and joint tube A in making connections (braze).



**A VIEW**



**Z VIEW**